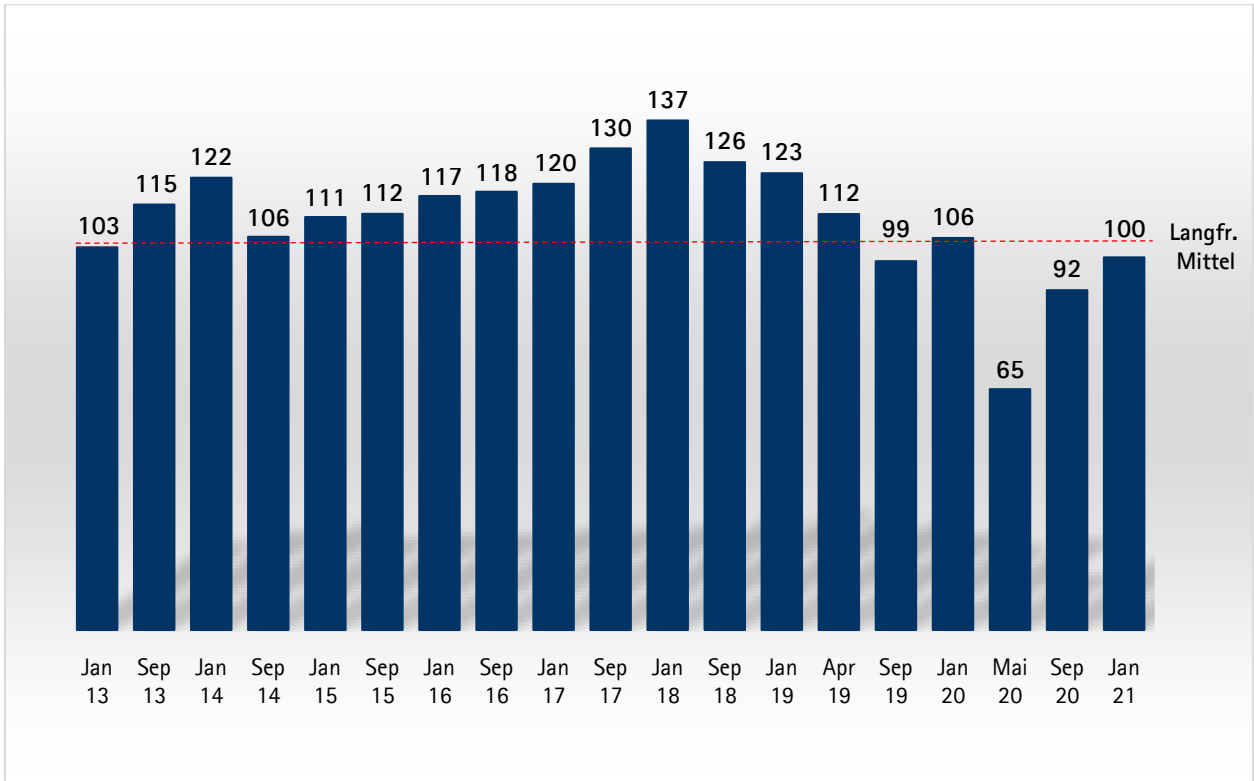
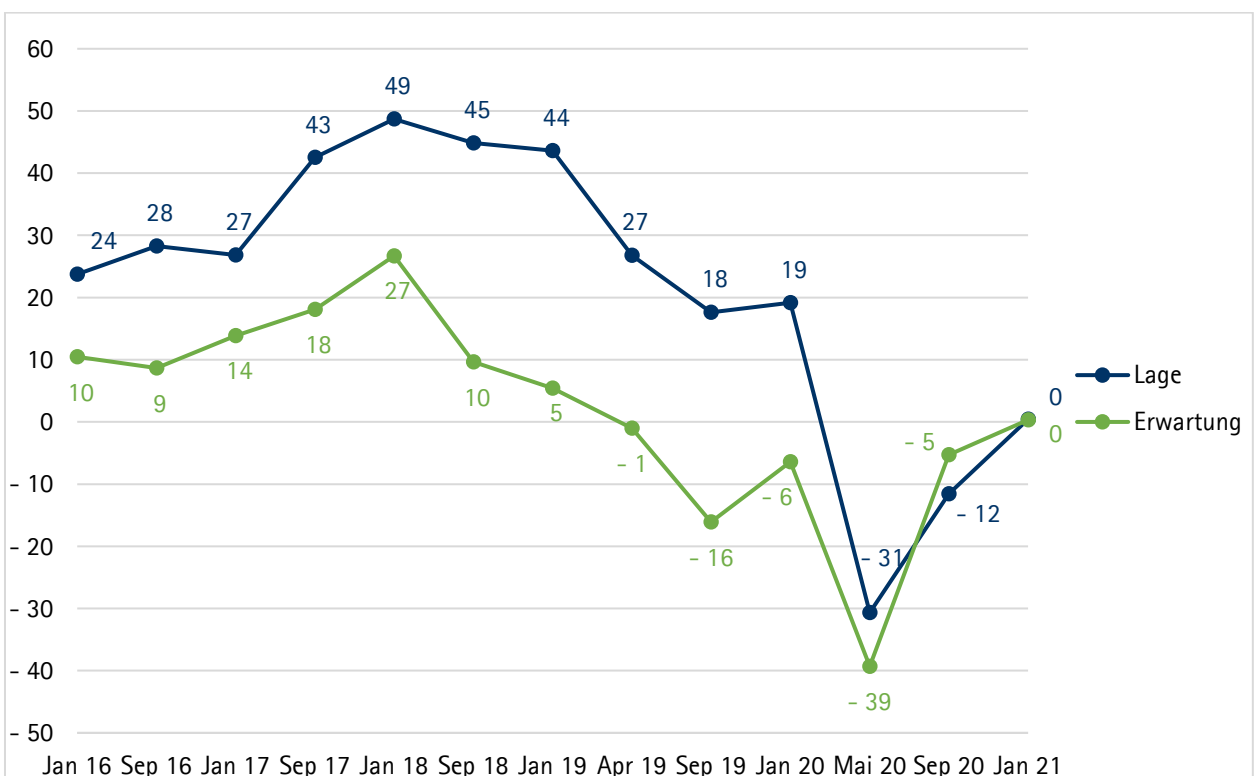


Konjunkturumfrage Jahresbeginn 2021 (572 Antworten)

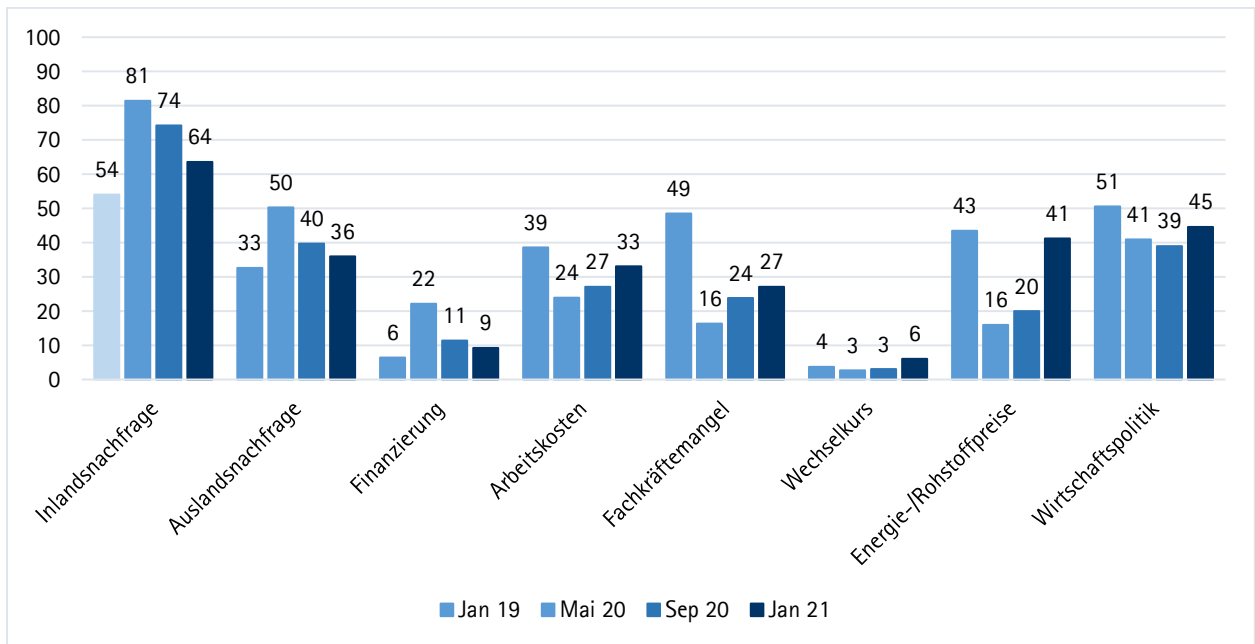
Konjunkturklimaindex für den Bezirk der Industrie- und Handelskammer Siegen



Lagebeurteilungen und Erwartung aller Unternehmen im IHK-Bezirk Siegen

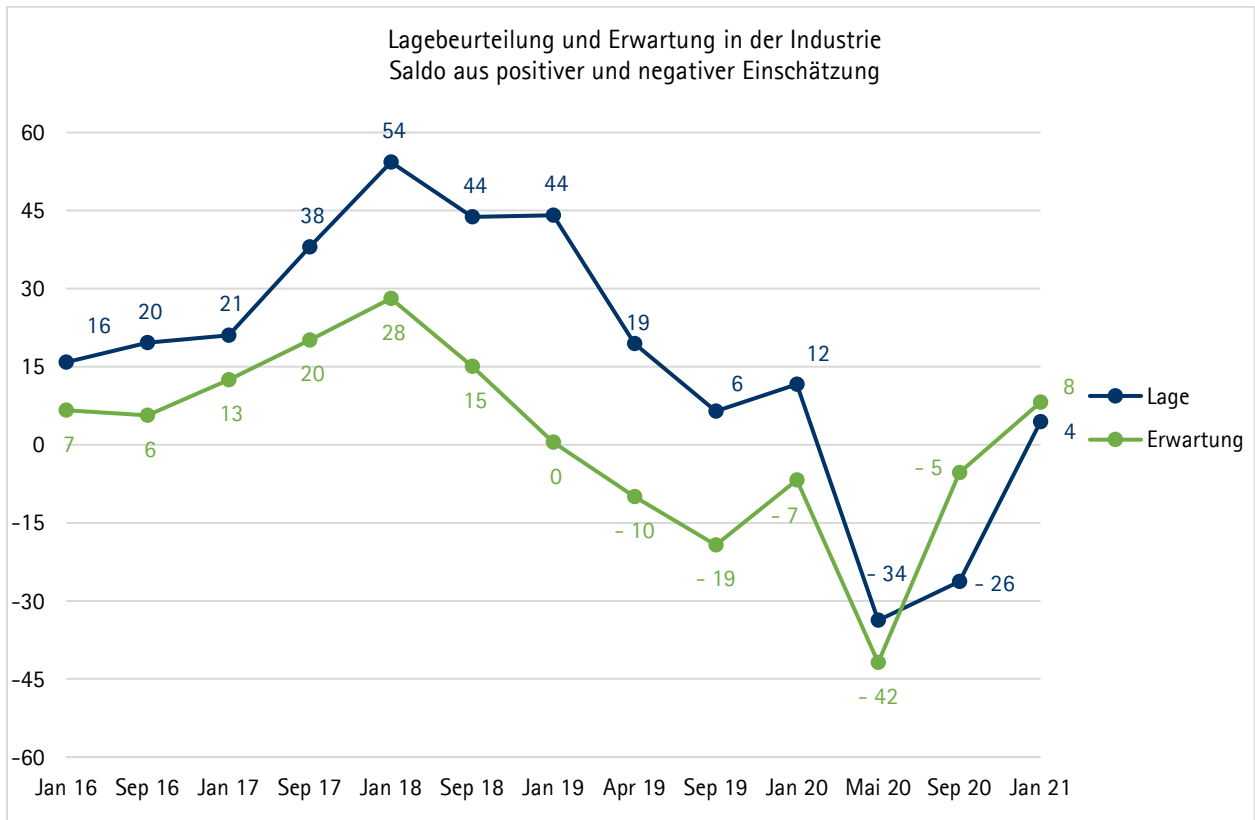


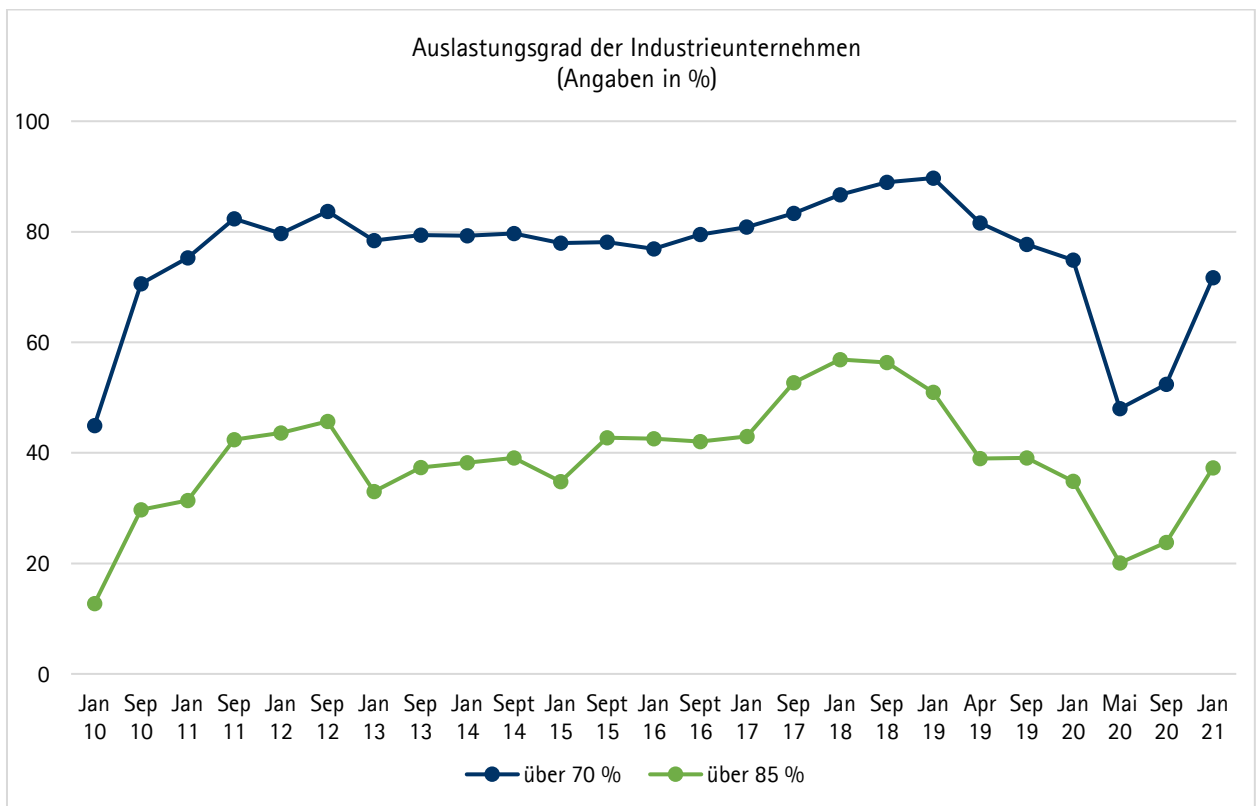
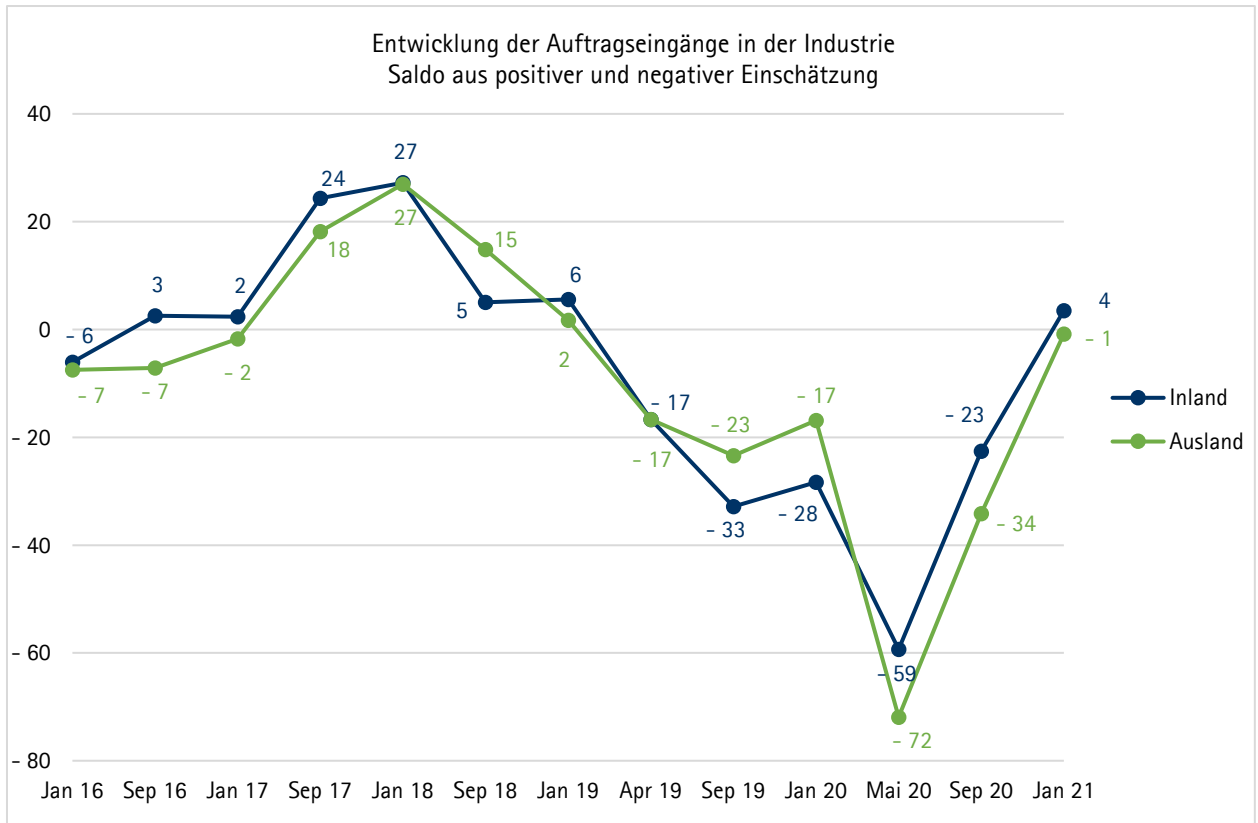
Risiken für die wirtschaftliche Entwicklung

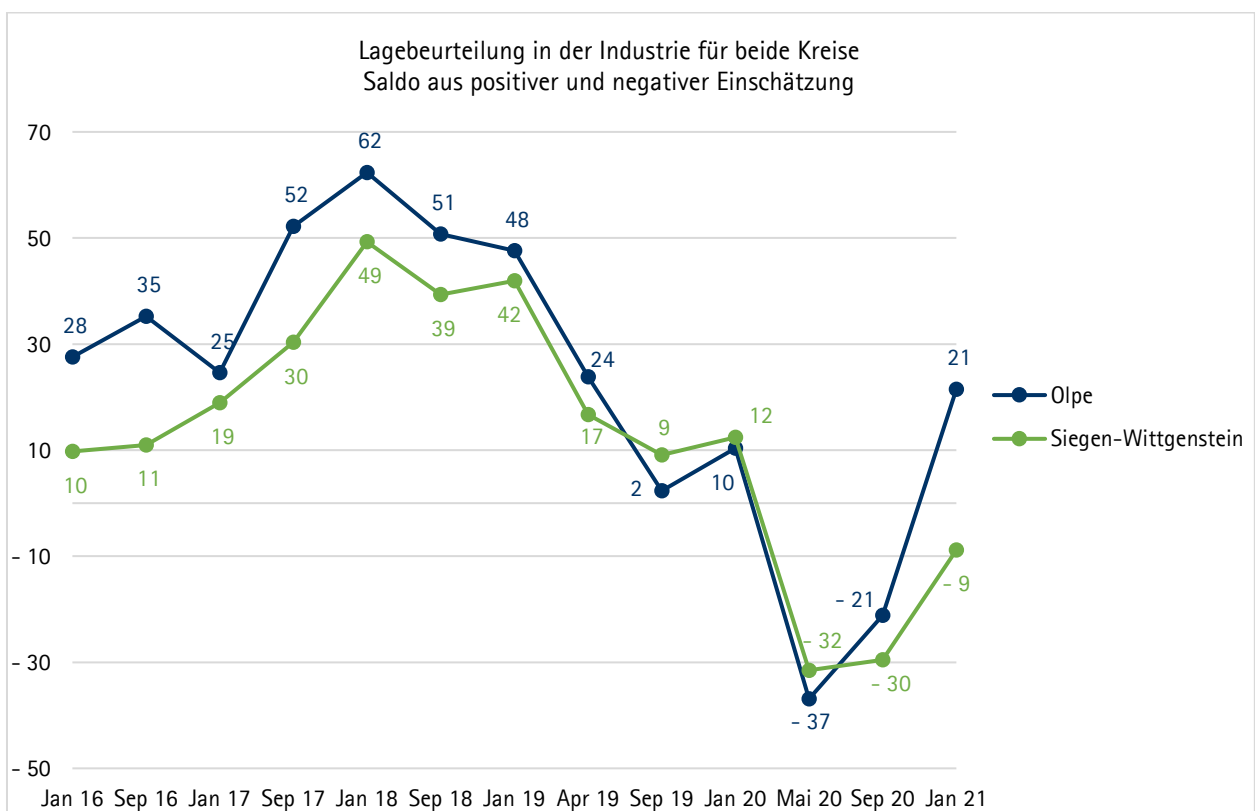
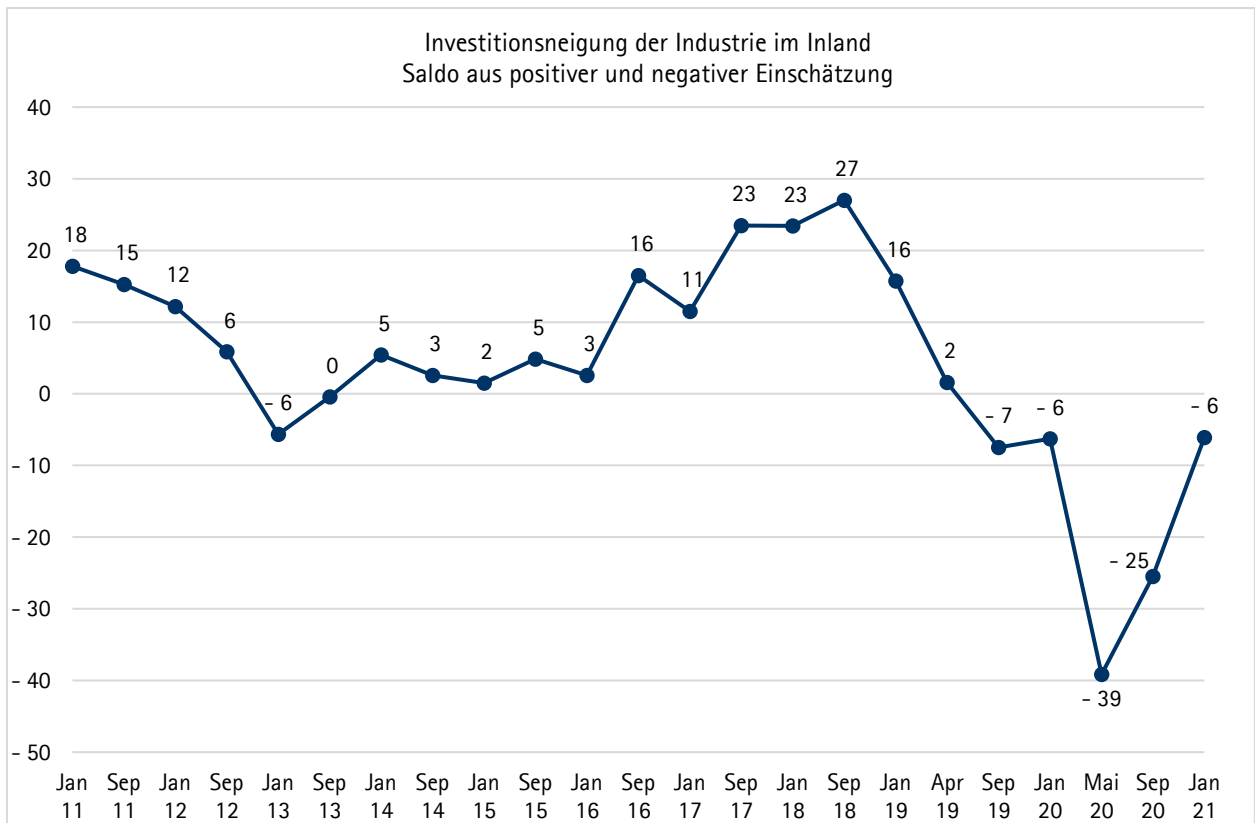


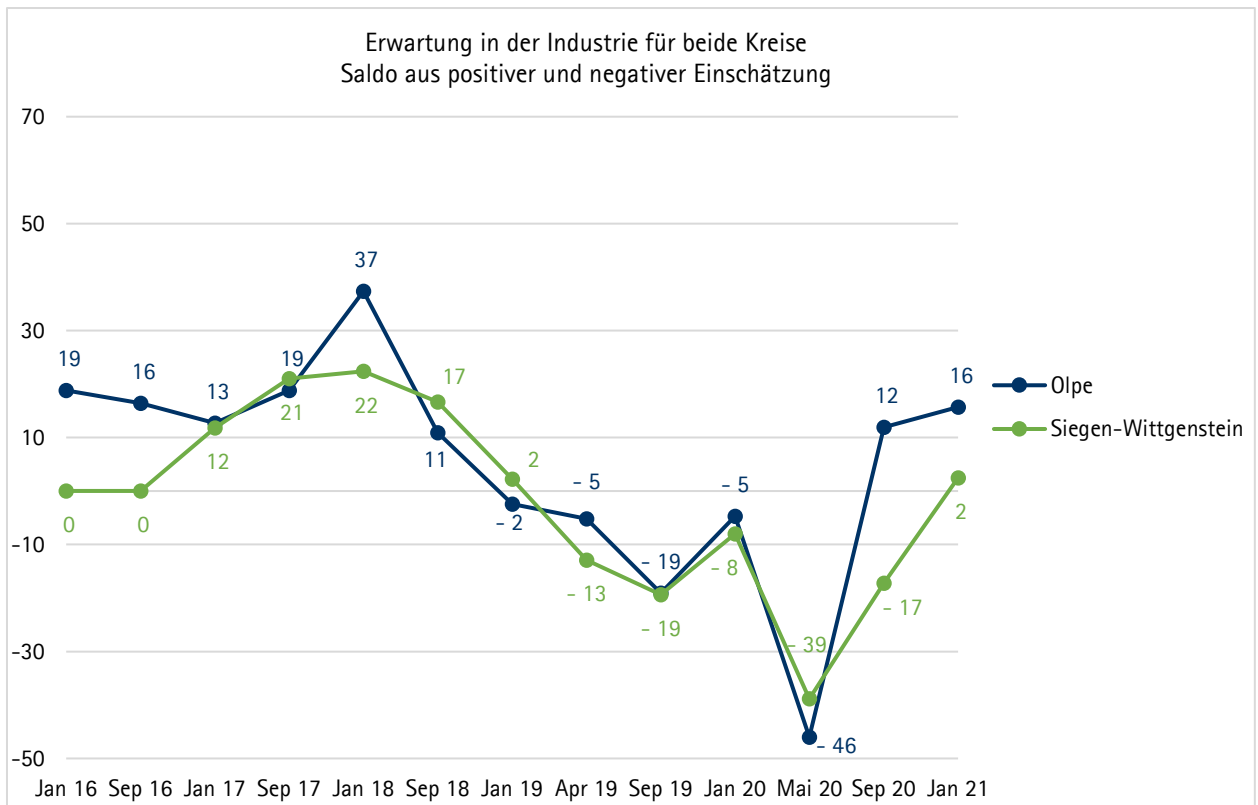
Blick in die Branchen

Industrie

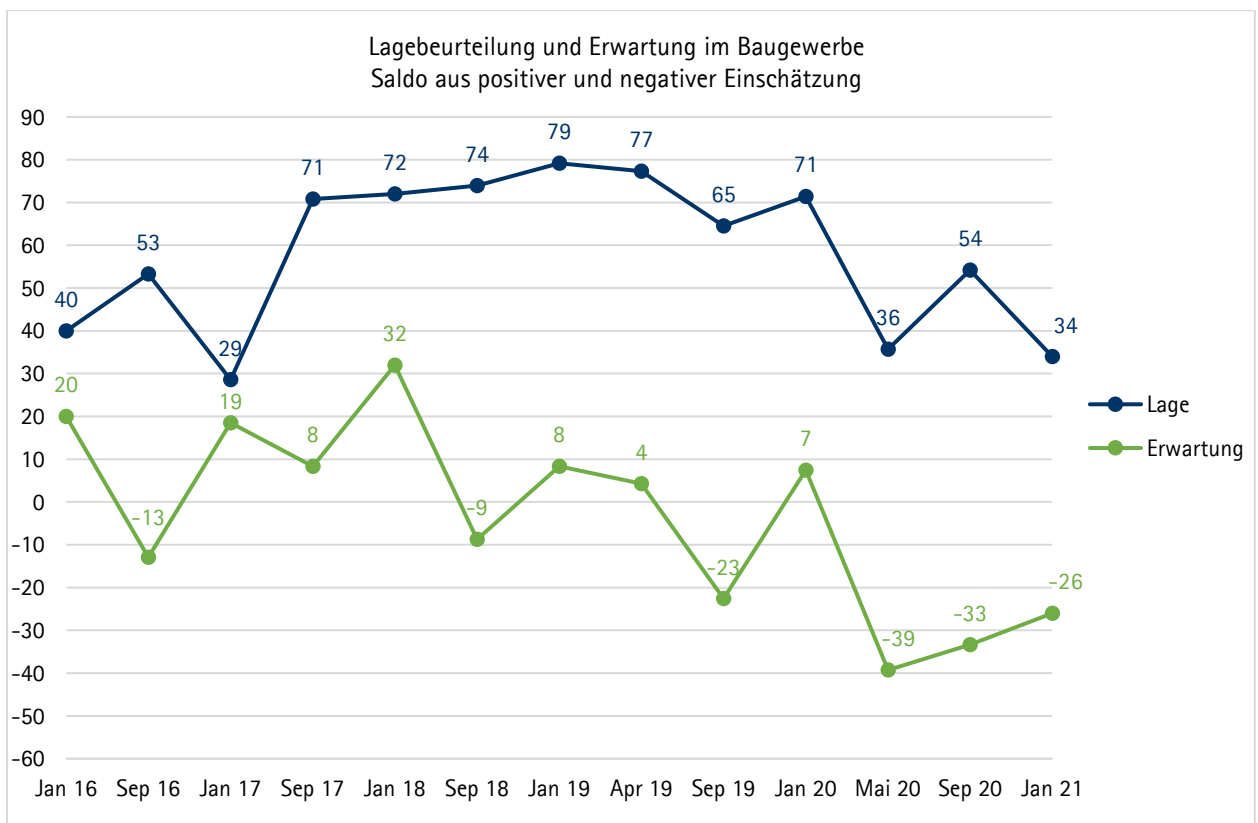




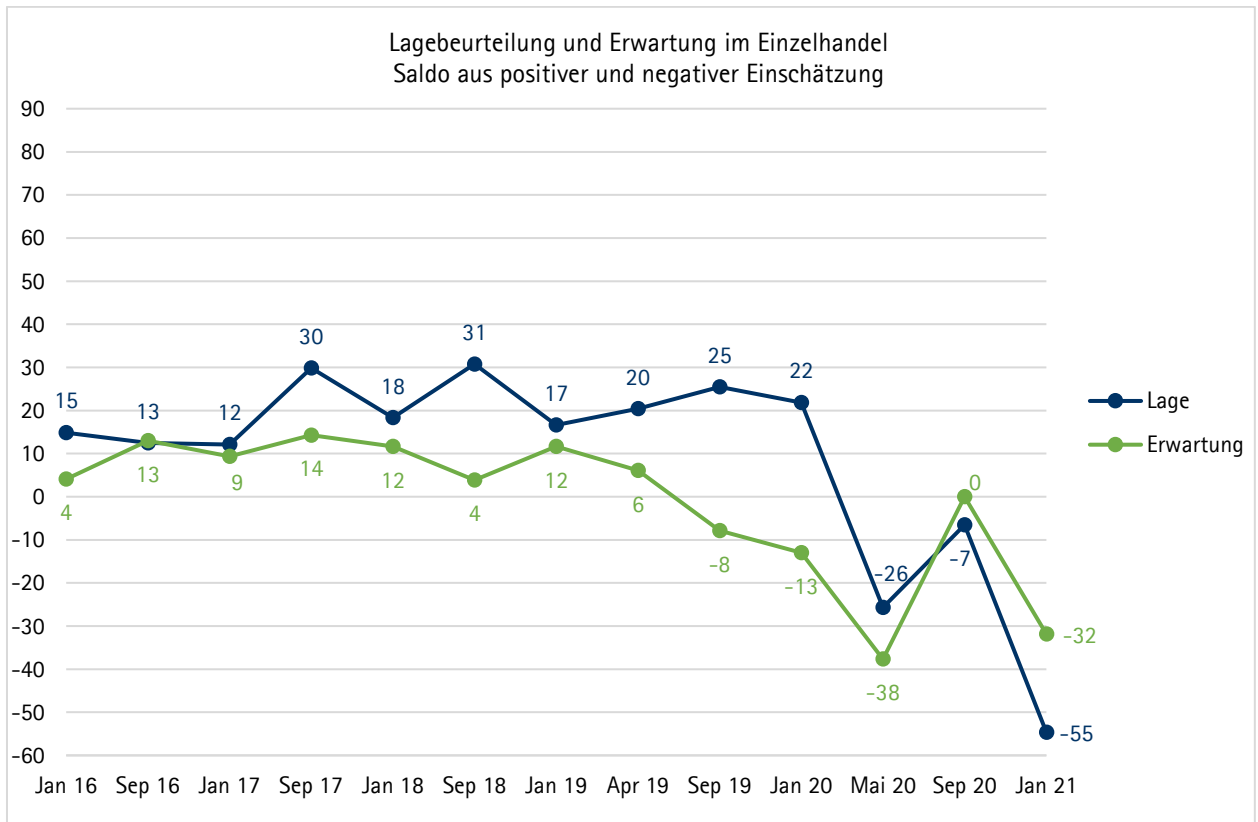




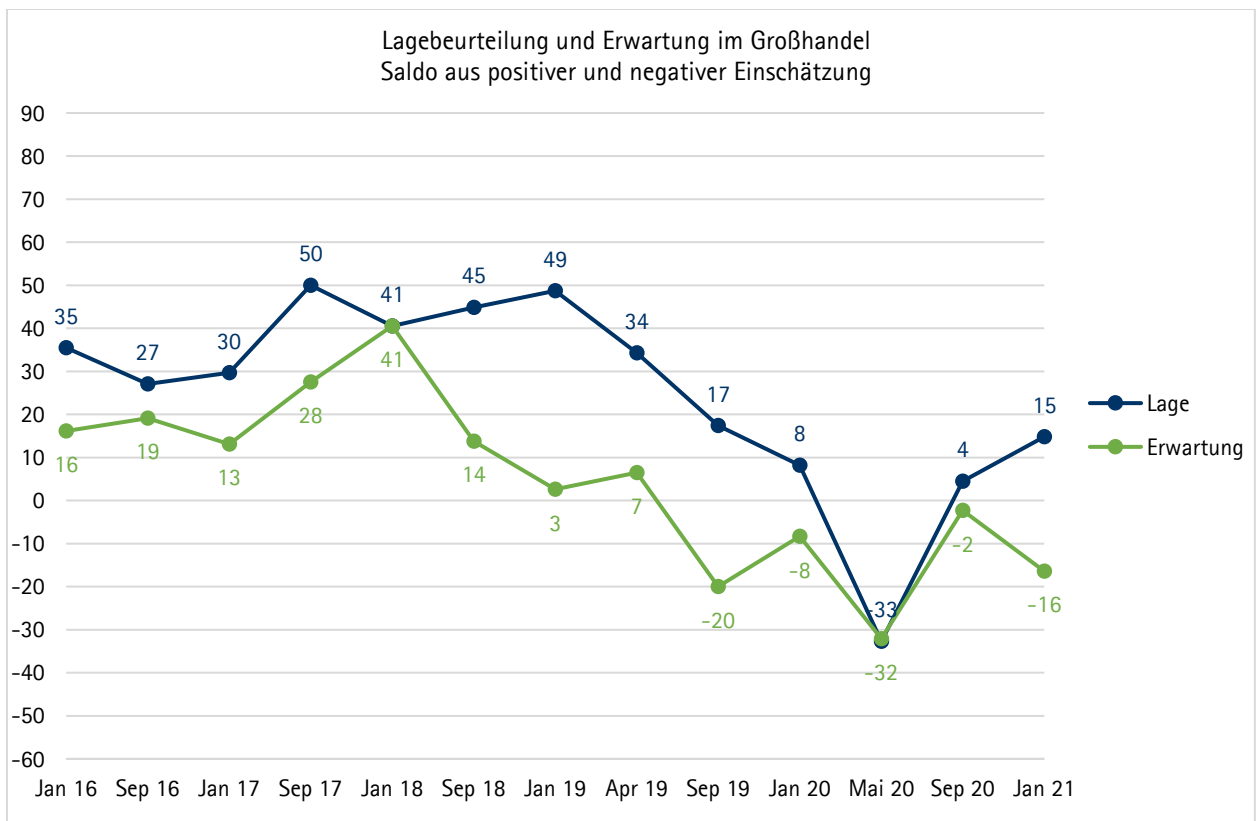
Baugewerbe



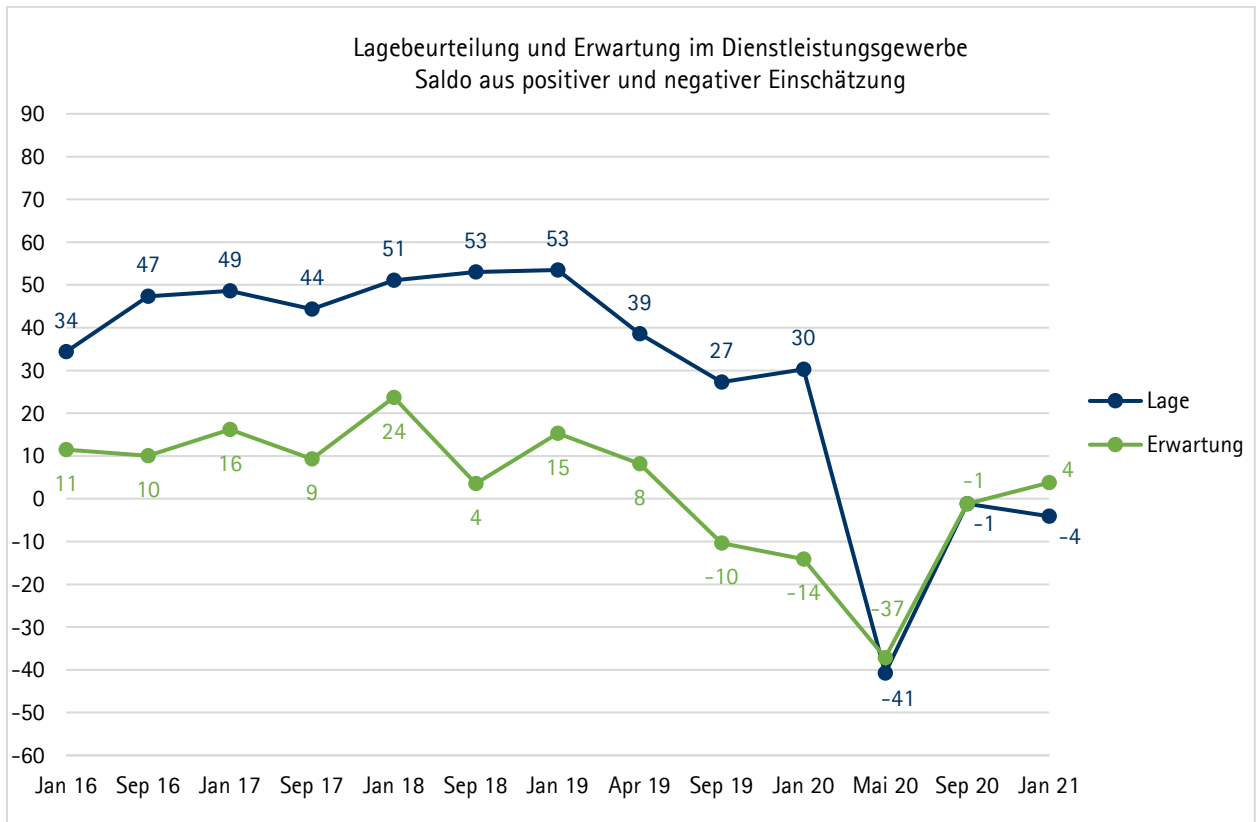
Einzelhandel



Großhandel



Dienstleistungsgewerbe



Gastgewerbe

